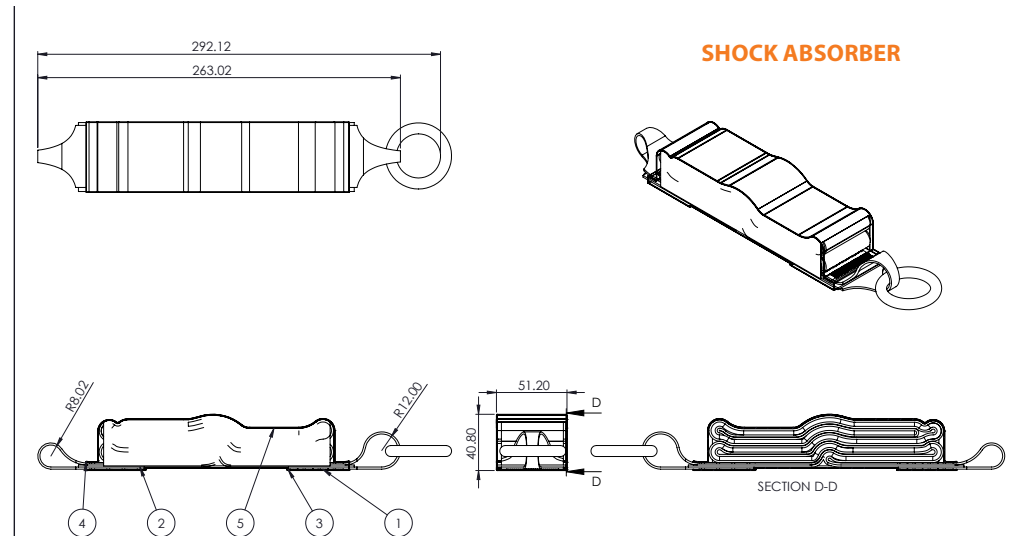
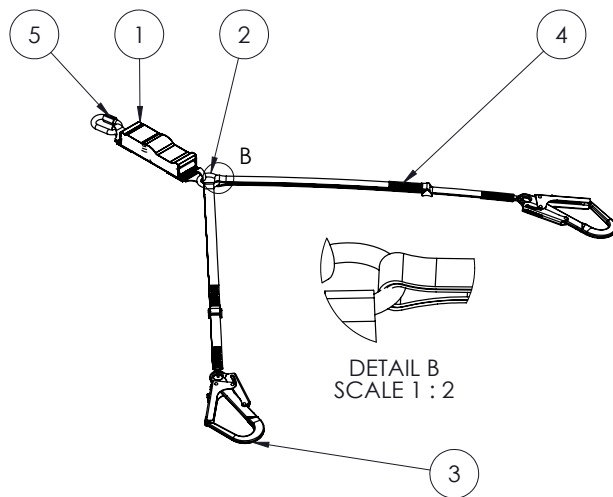


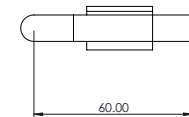
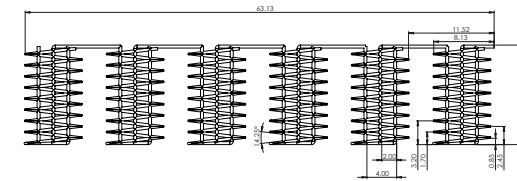
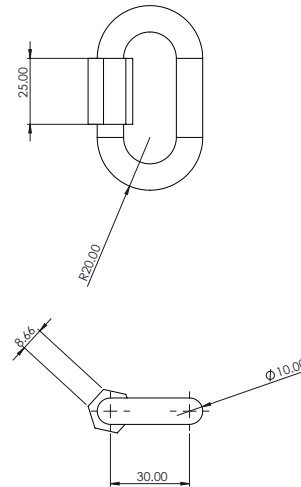
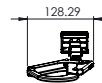
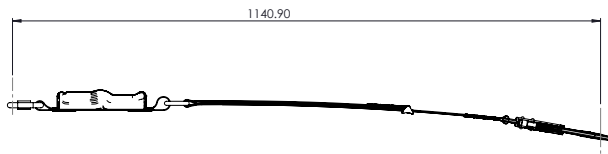
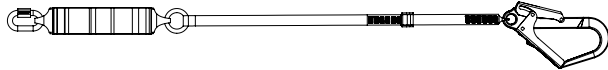
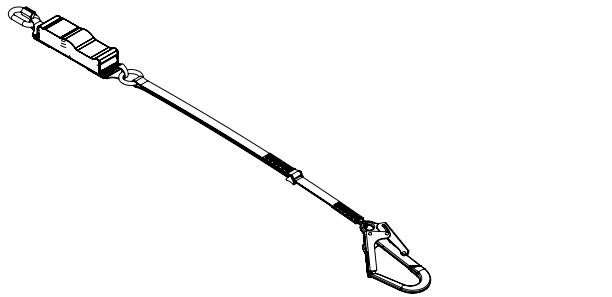
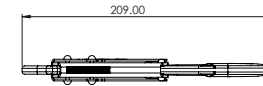
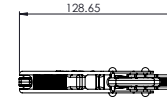
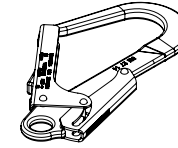
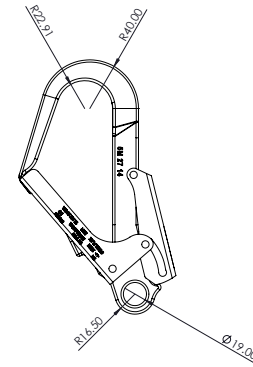
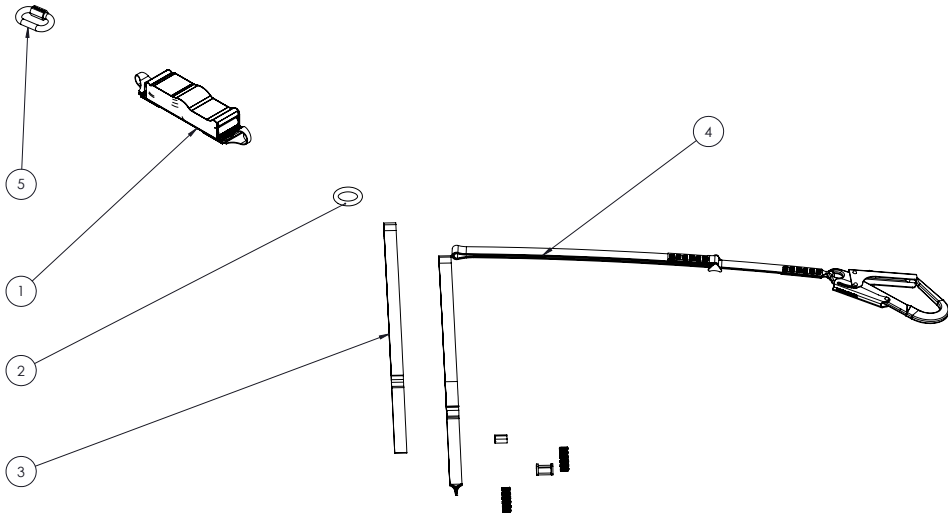
ENERGY ABSORBER WITH **ADJUSTABLE LANYARD** (70-170 cm)

 MODEL TYPE & IDENTIFICATION:
HL3-002

COMPONENT SPECIFICATIONS

Nr	Item Code	Component Description	Field Of Application	Raw Material / Metal Grade	Colour/Shade	Break Strength	CONF. Standard
1.	WEBC2035	Tubular webbing 25 mm black	Adjustable lanyard section	Polyester webbing	Black	2,2 Ton	N/A
2.	WEBC1983/1	50mm Tear Webbing	Energy Absorber	Polyester webbing	White	2,3 Ton	N/A
3.	HA6/006	Heat shrink tubing clear 50 mm	Safety cover for energy absorber and label	Polyolefin	Clear	N/A	N/A
4.	GLUE001	Glue Stick	Keeping webbing components together before sewing process	Poly Amides	Clear	N/A	N/A
5.	THREAD002	Sewing thread Amman Strong bond A320B Orange	Sewing of load bearing stitching webbing components	Polyester	Orange	6N/Tex	SANS 1362
6.	HSM/L/035	Info Label	Product certification information label	Manometric PVC coated with pressure sensitive, acrylic adhesive	White with colour art work	N/A	N/A
7.	HC3/002	Pylon hook / scaffold hook	Connection point of the lanyard that connects to the anchor point.	Forged steel and Zink polished	Silver	23 KN	EN362:2004
8.	HC4/002	10 mm Oval Mailion	For connecting the energy absorber to the users harness	Zink Plated carbon steel	Silver	23 KN	EN362:2004
9.	O-RING002	O-ring steel 8 mm X 40 mm	Ensures Lanyard is adjustable on the energy absorber side without causing damage	Zink Plated	Golden	23 KN	
10.	Slider005	H – Slider buckles	Adjustment of the lanyard legs.	Zink Plated	Golden	23 KN	







E N E R G Y
ABSORBER

THAT INTEGRATES AN ADJUSTABLE
DOUBLE LEG LANYARD
126 - 185 cm HL3-002

www.heightsafe360.com