

HEIGHTSAFETYLINE™

360

heightsafe

TRAINING • GEAR • PROJECTS

WEDGE SHOCK ABSORBER
WEDGE SOCKET

ENSURE HOLES ARE
IN-LINE BEFORE WELDING

88.5

WEDGE SOCKET

OUTLINE OF

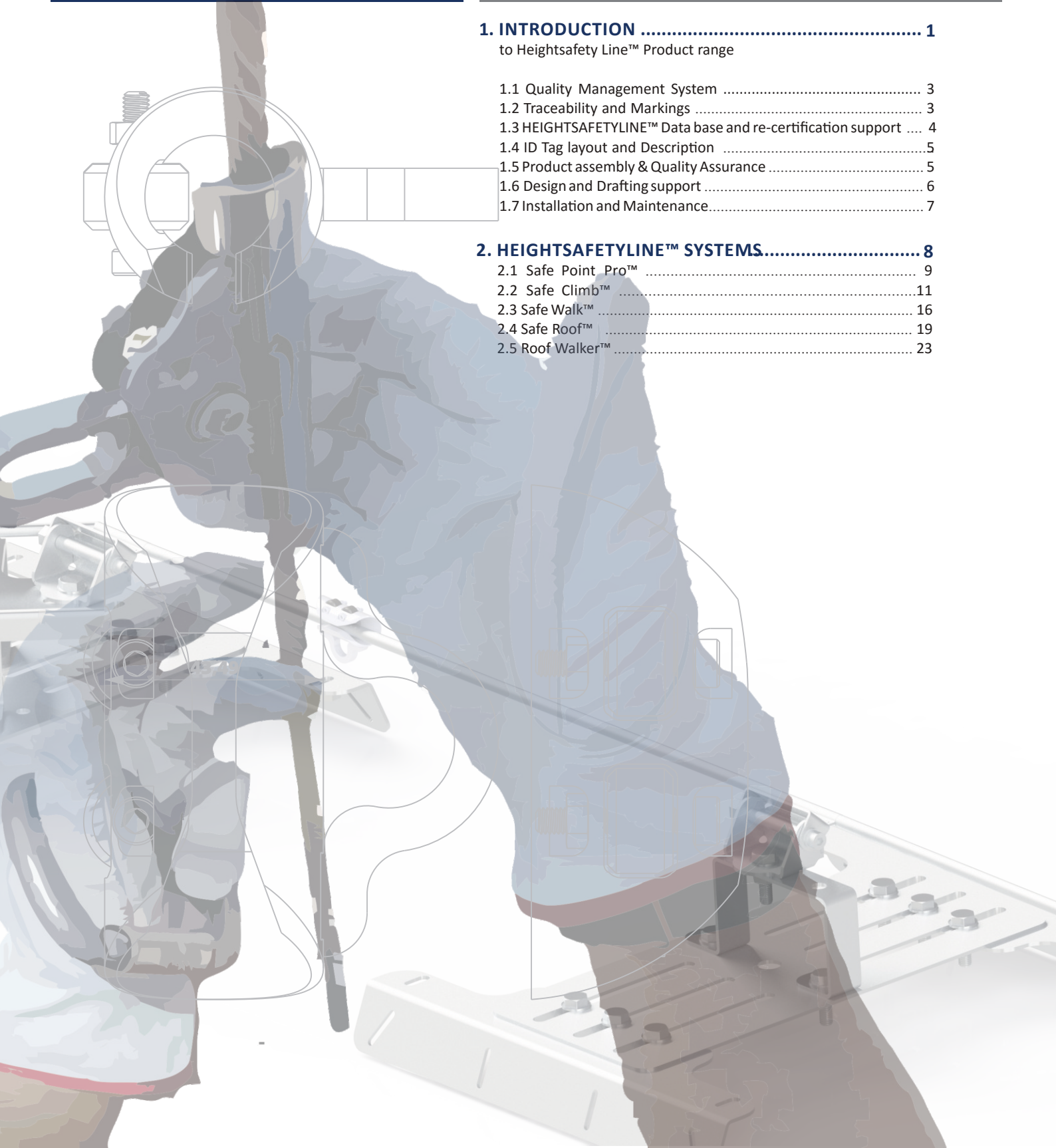
2022/23

CATALOGUE

PERMANENT FALL ARREST AND ROPE
ACCESS ANCHOR SOLUTIONS.



1. INTRODUCTION	1
to Heightsafety Line™ Product range	
1.1 Quality Management System	3
1.2 Traceability and Markings	3
1.3 HEIGHTSAFETYLINE™ Data base and re-certification support	4
1.4 ID Tag layout and Description	5
1.5 Product assembly & Quality Assurance	5
1.6 Design and Drafting support	6
1.7 Installation and Maintenance	7
2. HEIGHTSAFETYLINE™ SYSTEMS.....	8
2.1 Safe Point Pro™	9
2.2 Safe Climb™	11
2.3 Safe Walk™	16
2.4 Safe Roof™	19
2.5 Roof Walker™	23



1.

HEIGHTSAFETYLINE™

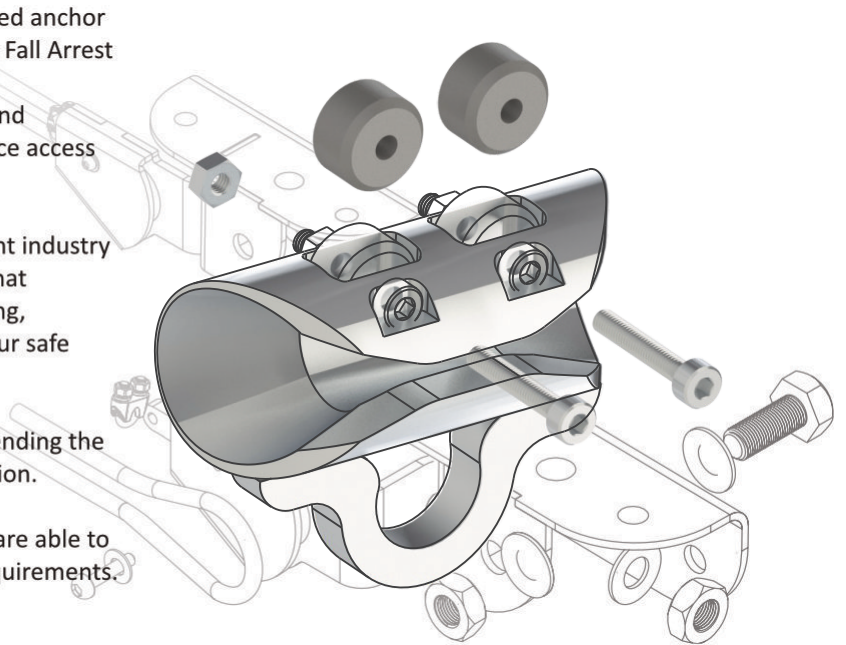
Product Introduction

HEIGHTSAFETYLINE™ is a range of permanent engineered anchor solutions for safe working-at-height access, when using Fall Arrest and or Rope Access Techniques. This uniquely patented design incorporates durability and simplicity to ensure an easy to use, and low maintenance access solution.

With two decades of experience in the working at height industry we are able to provide cost effective product support that includes concept design, implementation, manufacturing, installation, maintenance and orientation training for our safe working at height anchoring system.

Our product support will minimize the risk by recommending the best suited system for the maintenance access application.

Our broad distribution network and certified installers are able to provide a turnkey solution for all Height Safe access requirements.



1.1

HEIGHTSAFETYLINE™

Quality Management System

The quality of our product range is managed through a certified ISO 9001: 2015 Quality Management System that includes supported continual improvement plans and batch tests too guarantee a quality product every time.



1.2

HEIGHTSAFETYLINE™

Traceability and marking

The traceability of each component is guaranteed through its unique serial number that is clearly visible on the item itself. The serial number indicates the following:

HEIGHTSAFETYLINE™

Top Base Plate
HSL08B/290/13-03-0377
SANS 50795-1

<u>HSL08B/290/13-03-0377</u>	3.1	Item Code
HSL08B/290/ <u>13</u> -03-0377	3.2	Year of manufacture
HSL08B/290/13- <u>03</u> -0377	3.3	Batch number
HSL08B/290/13-03- <u>0377</u>	3.4	Item number in the batch

1.3

HEIGHTSAFETYLINE™

HEIGHTSAFETYLINE™ Data Base

All HEIGHTSAFETYLINE™ prepared and assembled systems are loaded onto our online data base and can be verified at www.heightsafetyline.com.

The data base assists in tracing and maintaining all installed systems.

All information about the system and the installation can be captured on this data base. The following information can be accessed:

HEIGHTSAFETYLINE™
CERTIFICATE OF CONFORMANCE
Safe Walk

SITE INFORMATION	
Site Name	A6
Site Address	1030 Sixteenth Rd Tilbury Business Park, A6
Site GPS Coordinate	
Serial Number	15-04-0054
Installation Technician Name	Norrie Michelle
Installation Technician ID No	3405010246081
Test Type	Hydraulic NZS0
Calibration Certificate Number	123456789
Length of Life Line	30
Number of Intermediate On Life Line	2
Safe Working Load of Life Line	2
Comments	

Type of System to be installed / inspected
Permanent Horizontal Life Line 15-04-0054

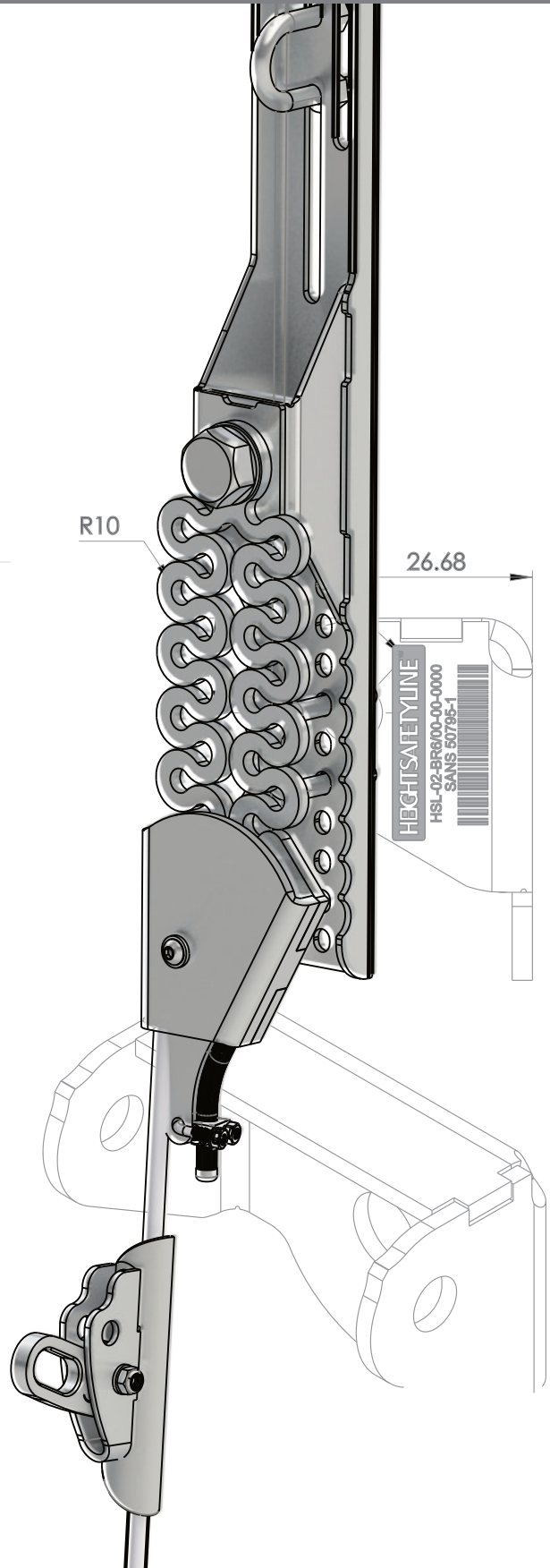
Type of Surface for Installation / Inspection
Other Steel

page 1 of 3

page 2 of 3

Item	Quantity	Unit	Material	Notes
1. Installation				
1.1. Top Seals	2		15	1982
1.2. 1st and 2nd Seals	1		15	1982
1.3. 3rd Seal	1		15	1982
1.4. 4th Seal	1		15	1982
1.5. 5th Seal	1		15	1982
1.6. 6th Seal	1		15	1982
1.7. 7th Seal	1		15	1982
1.8. 8th Seal	1		15	1982
1.9. 9th Seal	1		15	1982
1.10. 10th Seal	1		15	1982
1.11. 11th Seal	1		15	1982
1.12. 12th Seal	1		15	1982
1.13. 13th Seal	1		15	1982
1.14. 14th Seal	1		15	1982
1.15. 15th Seal	1		15	1982
1.16. 16th Seal	1		15	1982
1.17. 17th Seal	1		15	1982
1.18. 18th Seal	1		15	1982
1.19. 19th Seal	1		15	1982
1.20. 20th Seal	1		15	1982
1.21. 21st Seal	1		15	1982
1.22. 22nd Seal	1		15	1982
1.23. 23rd Seal	1		15	1982
1.24. 24th Seal	1		15	1982
1.25. 25th Seal	1		15	1982
1.26. 26th Seal	1		15	1982
1.27. 27th Seal	1		15	1982
1.28. 28th Seal	1		15	1982
1.29. 29th Seal	1		15	1982
1.30. 30th Seal	1		15	1982

page 3 of 3



1.4

HEIGHTSAFETYLINE™

ID Tag layout and description

All the serial numbers of each component that forms part of a prepared and or installed system, can be traced back to the serial number on the ID tag through the online data base system.

The unique ID tag incorporates all the required information of the provided safe working at height system

1 THE SERIAL NO:

Incorporates all parts and components of the anchoring system through the data base linked to this new serial no. All joined parts can now be traced back via this unique identification number.

2 SAFE WORKING LOAD:

The maximum number of users that may use the system is indicated on the TAG?

3 STANDARD:

The SANS 50 Standard that the product conforms to is indicated in the block next to the standard. It is either SANS 50 353 for vertical life lines and SANS 50 795 for anchor points and horizontal life lines.

4 CERTIFICATION DATE:

The system must be re-inspected and re-certified safe to use on an annual basis. The next certification date is indicated in the small circle on the edge of the TAG.



HEIGHTSAFETYLINE™

WARNING

FALL ARREST SYSTEM TO BE USED AT ALL TIMES!
VERTICAL & HORIZONTAL LIFELINES TO BE USED BEYOND THIS POINT.

SYSTEM INSTALLED & MAINTAINED BY:

Fall Arrest system may only be used by proven competent personnel who connects to the fall arrest system by a certified full body harness and fall arrest device.

Failure to understand the risks involved may result in serious injury or even death.

Only use the system after checking that the inspection date marked on the ID plate (round disc) falls within the 12 month certified period. DO NOT USE IF OVERDUE for re-certification that the system is Overdue, please report it to the Site Safety Officer.

WORKING AT HEIGHT ACTIVITIES IS POTENTIALLY DANGEROUS. FAILURE TO ABIDE BY THESE WARNINGS MAY RESULT IN SERIOUS INJURY OR DEATH.

Systems installed on this site:

LINE	SERIAL NUMBERS	LAST CERTIFICATION DATE	LAST CERTIFICATION DATE	LAST CERTIFICATION DATE	LAST CERTIFICATION DATE	LAST CERTIFICATION DATE
1						
2						
3						
4						
5						
6						
7						
8						
9						
10						
1						
2						
3						
4						
5						
6						
7						
8						
9						
10						
1						
2						
3						
4						
5						
6						
7						
8						
9						
10						
1						
2						
3						
4						
5						
6						
7						
8						
9						
10						

Phone: 0861 127 749 | Website: www.heightsafety.co.za



1.5

HEIGHTSAFETYLINE™

Quality Assurance

Our quality assurance system governs our entire manufacturing, assembly and packaging process to guarantee that the life line system is ready to install.

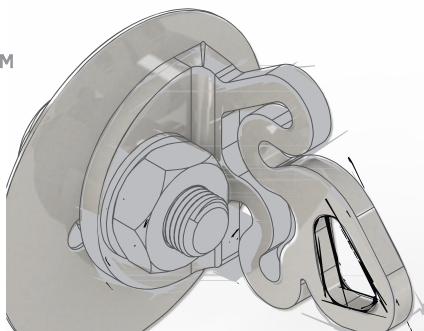
Our assembly production line infrastructure assures a high quality output of the product.

Our new wedge socket design simplifies cable end terminations and no pull testing is required.

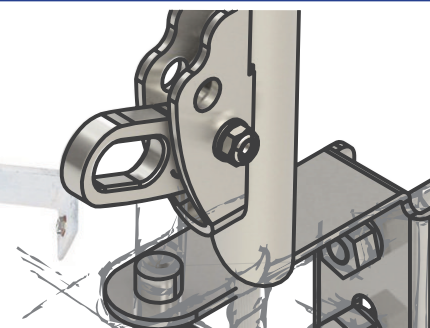
Each and every system comes securely packaged in its own box with all assembly components users' instructions, safety signs and installation quality assurance documents ready for installation.



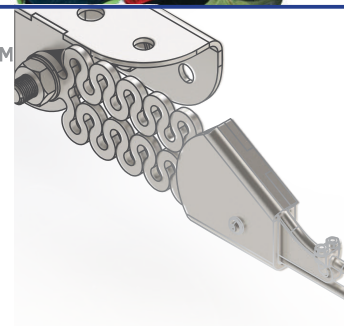
HEIGHTSAFETYLINE™
SAFEPOINT



HEIGHTSAFETYLINE™
SAFECLIMB



HEIGHTSAFETYLINE™
SAFEWALK



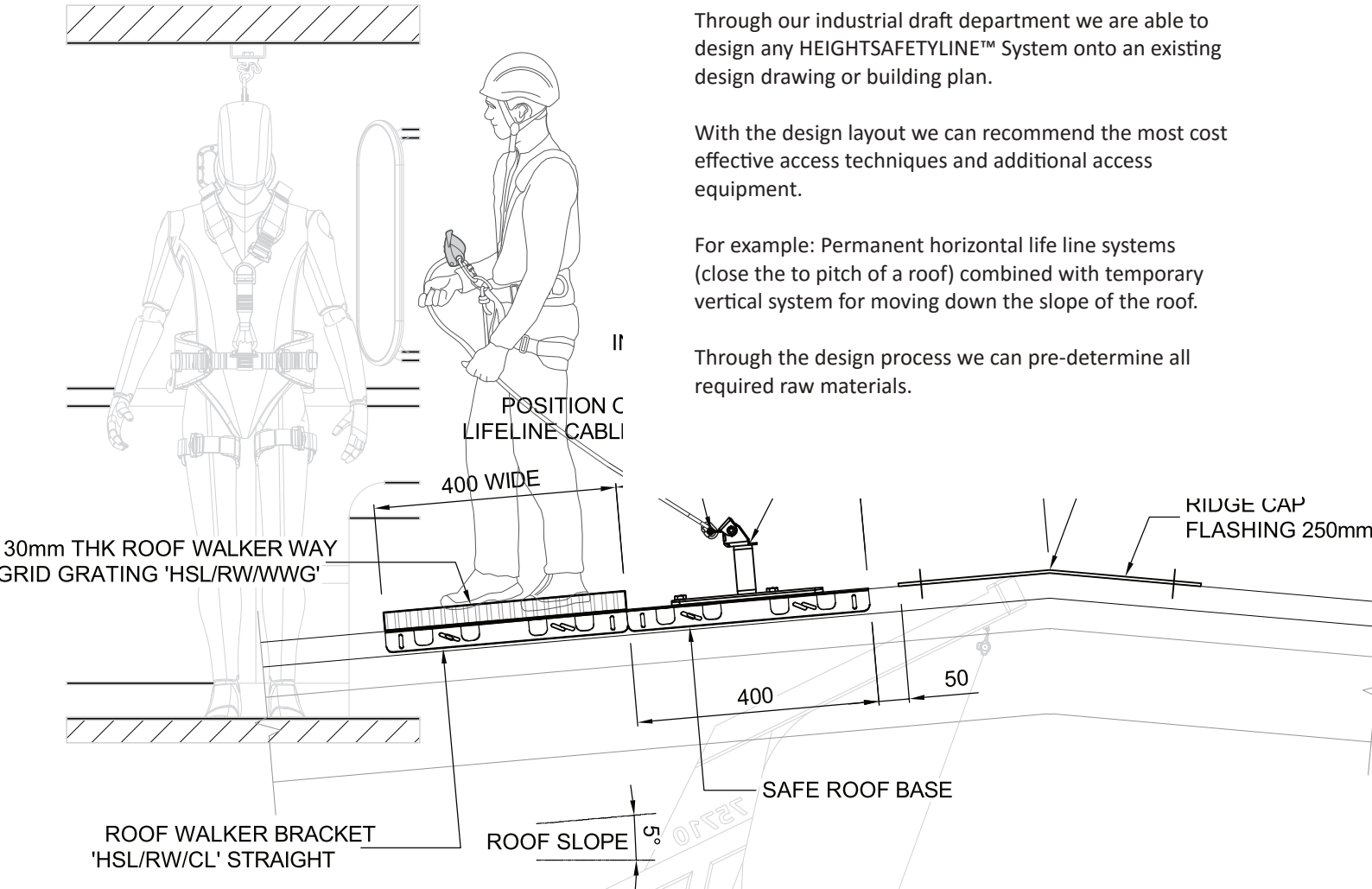
HEIGHTSAFETYLINE™
SAFEROOF



1.6

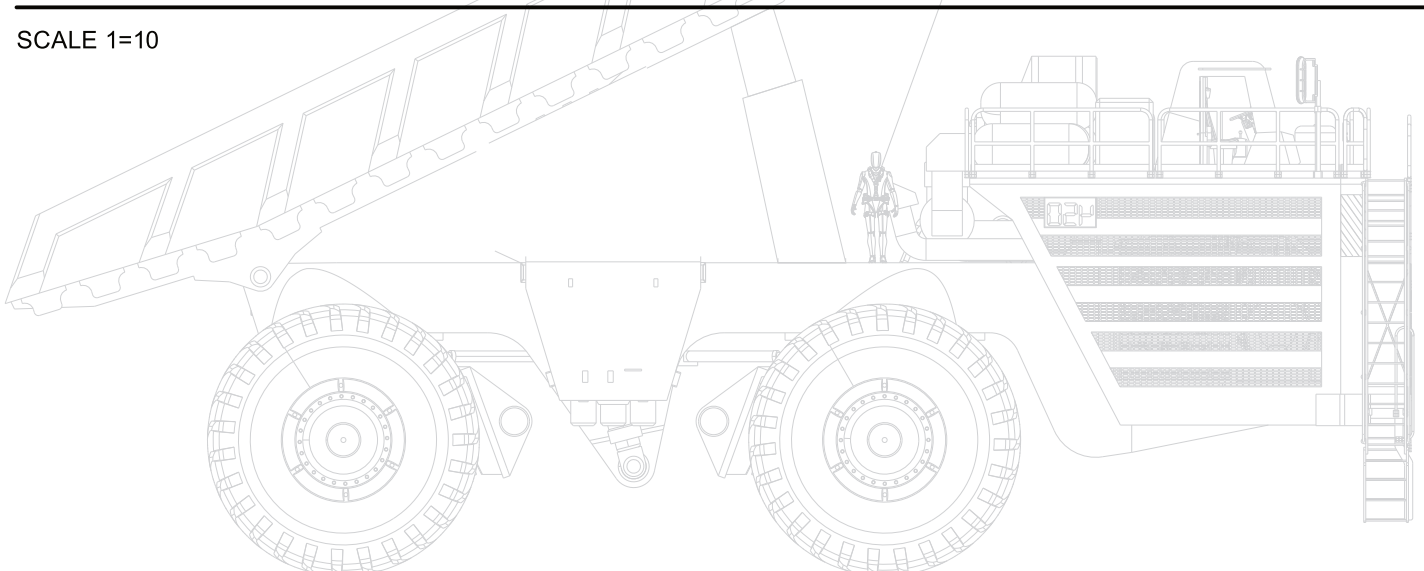
HEIGHTSAFETYLINE™

Design and drafting support



TYPICAL SECTION ON SAFE ROOF WITH ROOF WALKER

SCALE 1=10



1.7

HEIGHTSAFETYLINE™

Installation and maintenance of all our HEIGHTSAFETYLINE™ systems can be guaranteed through our highly skilled, permanently employed rope access teams. Subcontractors that has completed the certified installer course.

All teams are fully mobile and equipped to do any type of life line installation on the most safety strenuous work site.

By making use of a combination of rope access and fall arrest techniques we are able to safely, access the most difficult installation areas in a very short turnaround time.

Each installation technician is trained and registered on the HEIGHTSAFETYLINE™ data base as a certified installer. All installations done by a certain technician can be traced back to that specific installer.

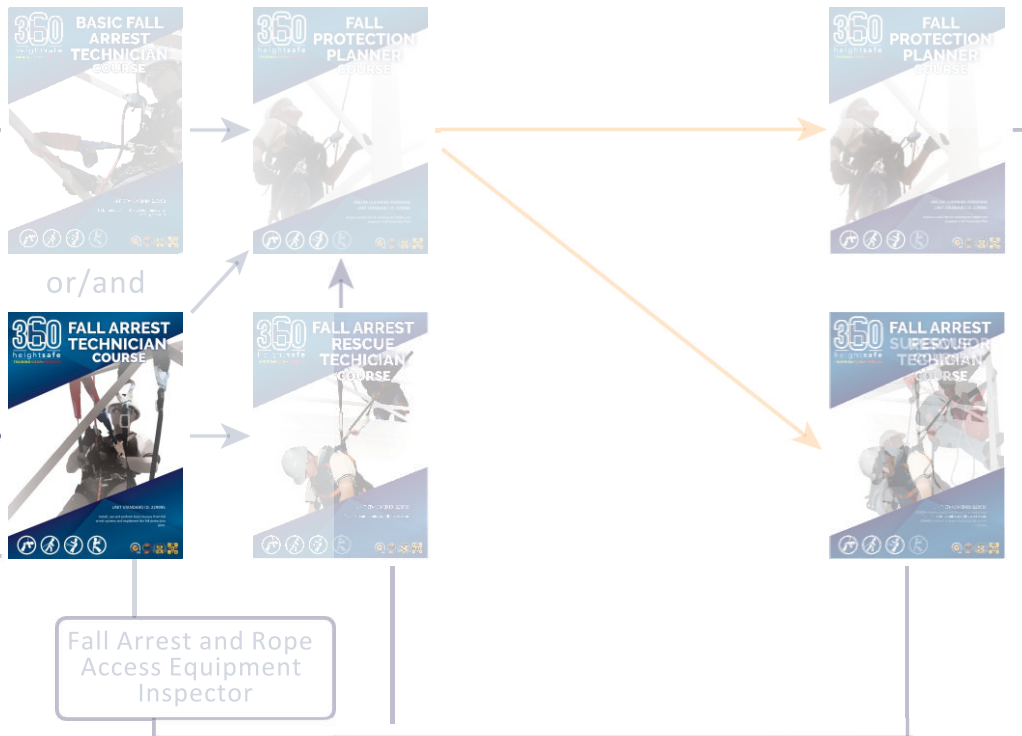
**Training available on all systems,
for booking please go to:**

<https://bookings.heightsafety.co.za/Customer/Welcome>

Installation and maintenance:



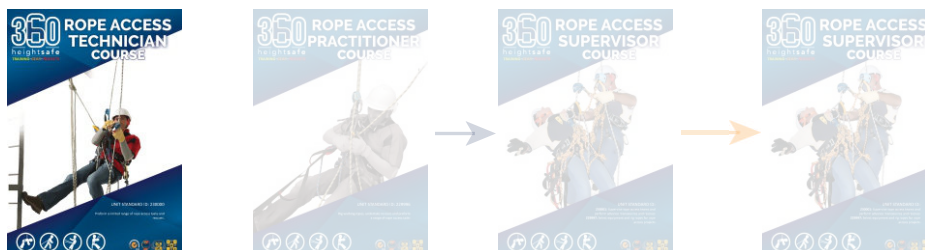
**Fall Arrest
Training
line up:**



**Telecoms
Training
line up:**



**Rope
Access
Training
line up:**



**Heightsafety
Line Training
line up:**



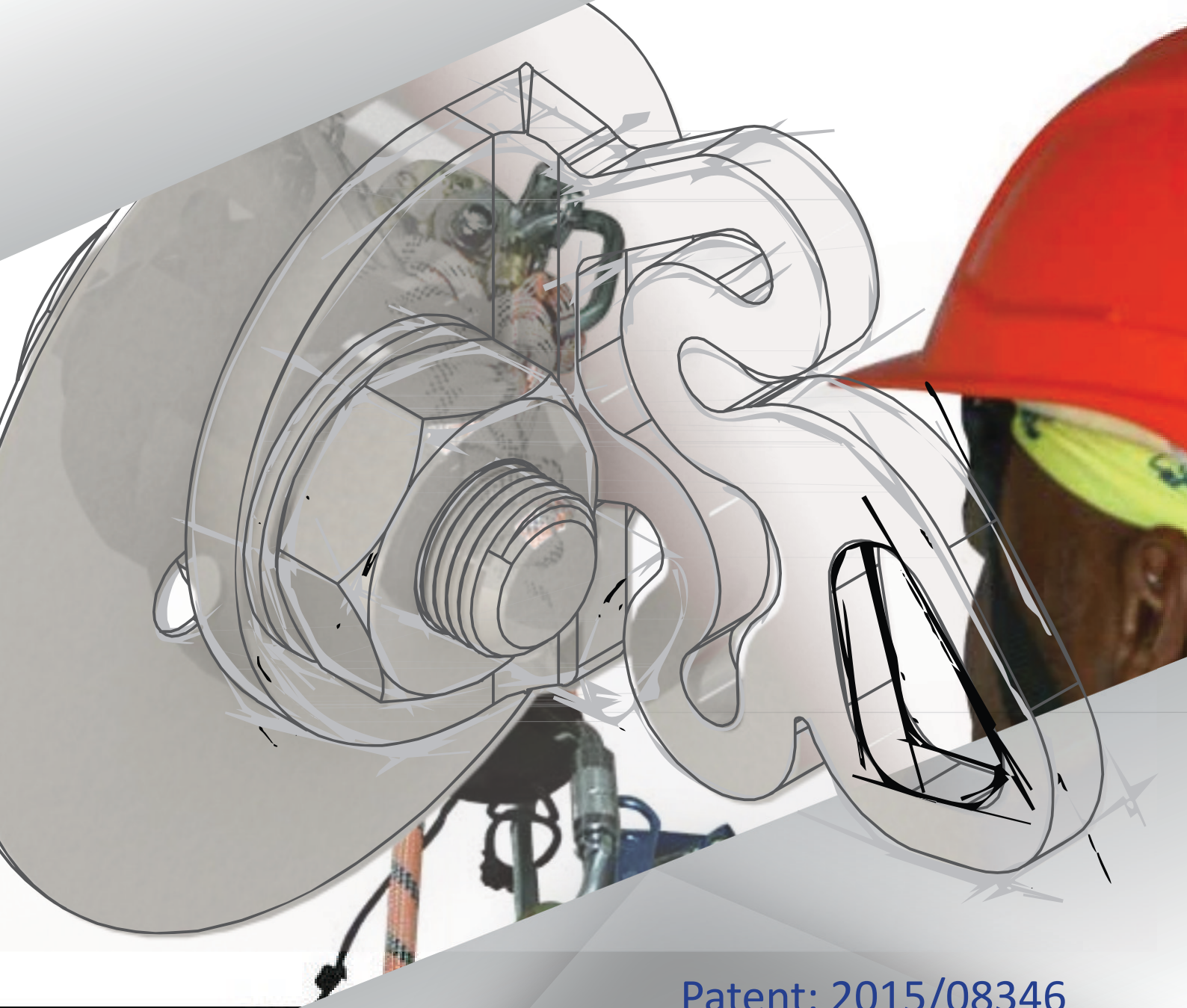
360

heightsafe

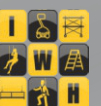
TRAINING • GEAR • PROJECTS



HEIGHTSAFETYLINE™
SAFEPOINT



Patent: 2015/08346



2.1

HEIGHTSAFETYLINE™

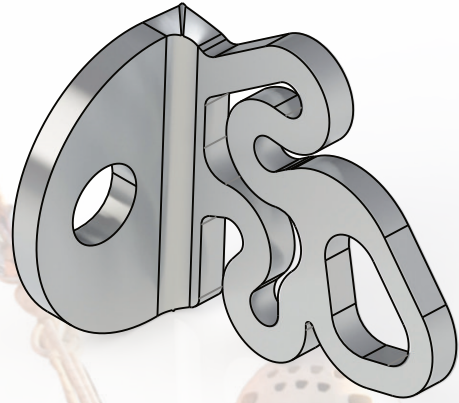
Safe Point™

The Heightsafetyline™ Safe Point™ is a permanent anchor point that can be used for Fall Arrest, Rope Access and Rope Rescue applications.

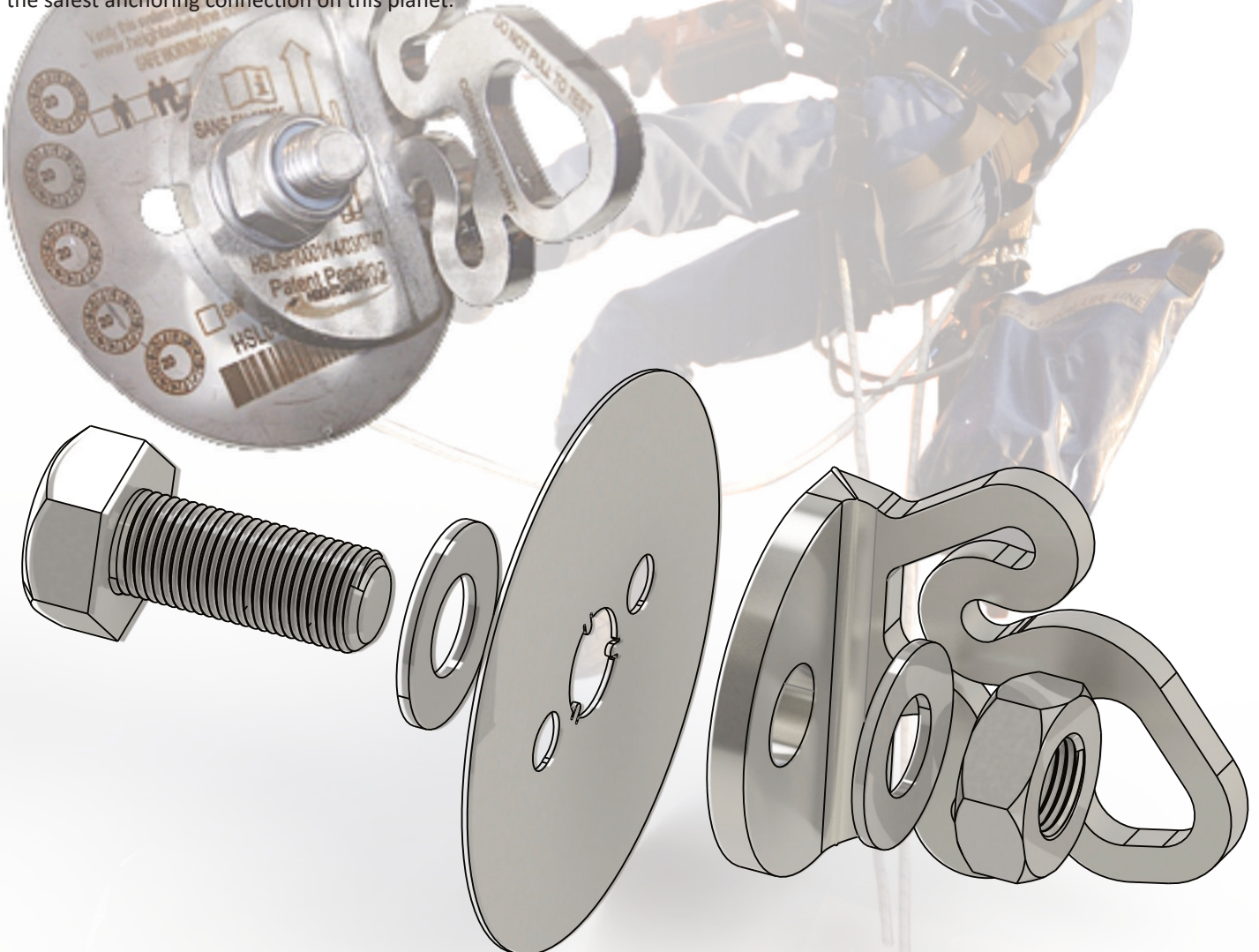
The Safe Point™ does not only allow for a fast, safe and an easy anchoring point but will also assist in absorbing the energy in the event of the fall.

Manufactured from a 316 grade stainless steel of 6mm thick the Safe Point™ is a robust, weather proof device that will last in the harshest conditions. The shock absorber will keep the forces generated during the fall below 6 KN and once fully deployed the failure point of the material is 50 KN.

This unique patented anchor system design, allows for easy attachment to almost any type of structure. Safe Point™ has no moving parts and or components that can get lost or that require additional maintenance. The simple easy-to-use anchoring system will guarantee the safest anchoring connection on this planet.



Safe Point - [HSL/SP/COM](#)
Patent: 2015/08346



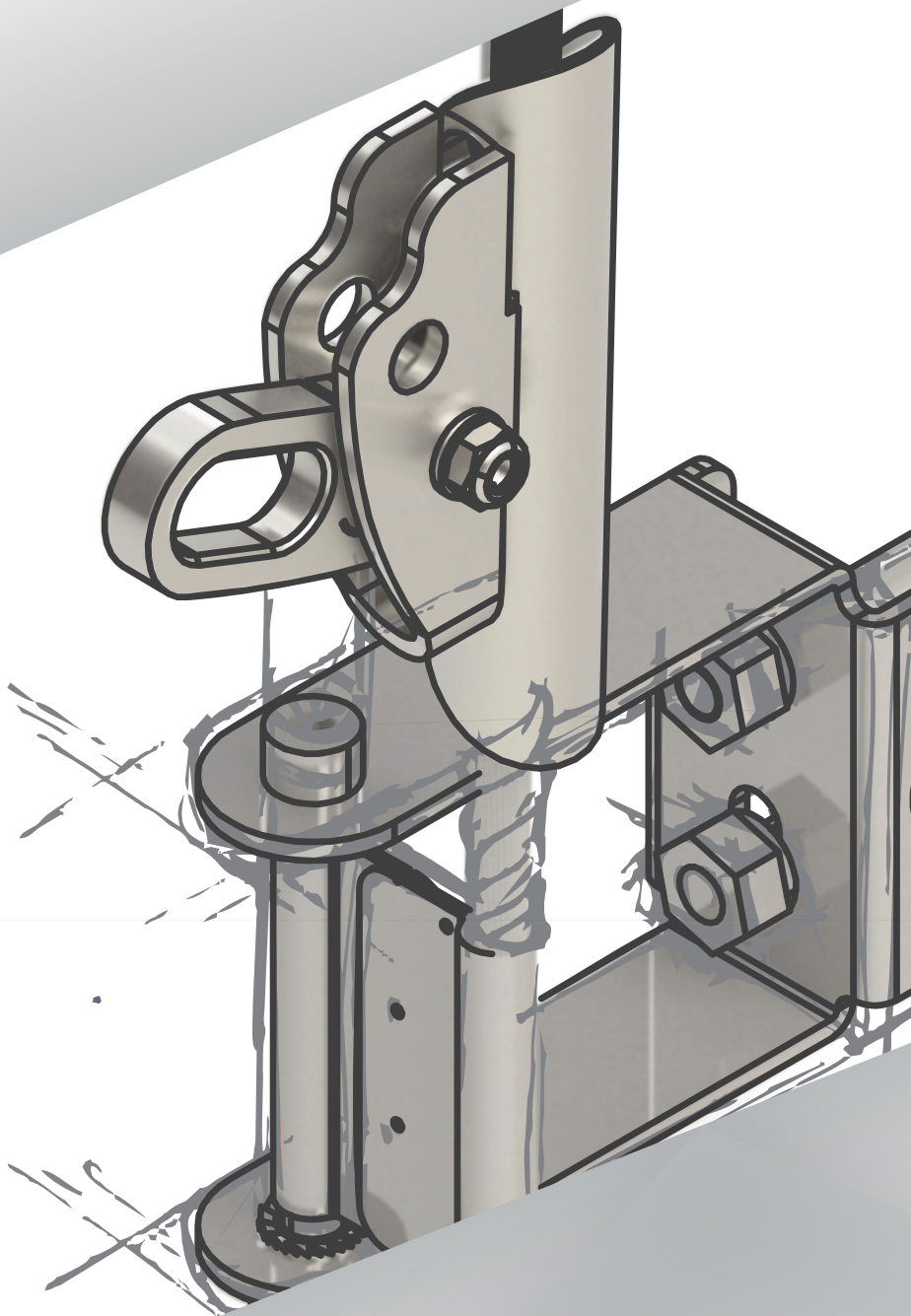
360

heightsafe

TRAINING • GEAR • PROJECTS



HEIGHTSAFETYLINE™
SAFECLIMB



2.2

HEIGHTSAFETYLINE™

SAFE CLIMB™

SAFE CLIMB™ is a durable, permanent, vertical fall arrest life line system designed specifically for structures where climbing is required. The advantage of using SAFE CLIMB™ system is that a fall arrest anchoring solution is permanently available.

SAFE CLIMB™ incorporates simplicity and low maintenance in the design as well as an easy to use system where all parts, components and accessories are permanently present ready to be used.

The entire SAFE CLIMB™ system is manufactured from a 316 grade stainless steel and the parts and components are not only robust but will withstand the harshest working conditions. The system will not only arrest a fall safely but will also ensure that no additional structural damage is caused during the fall and that forces generated during a fall is kept below allowable limits. Only the shock absorber needs to be replaced in the event of a fall and not the entire system.

The fall arrest runner cannot be removed from the system. The user can connect and climb the system without requiring any additional loose components.

If more than one user is required to use the system more than one permanent fall arrest runner can be added. The entire system with mounting brackets has been designed to be as close as possible to the ladder to reduce the overall wind load factor on the structure and still look aesthetically pleasing. The shuttle has a unique lock function where the user can stop and any point on the system, lock the shuttle and disconnect or move away from the ladder to the working area. The shuttle will remain in the locked position, in the specific area, until it is required to be used again.

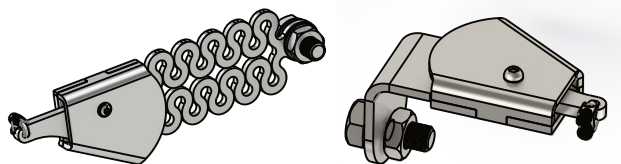
The shuttle also has a lock out function that can be done with a normal padlock to prevent any other user from using the system.



2.2

HEIGHTSAFETYLINE™

SAFE CLIMB™

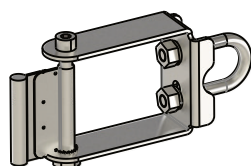


Wedge Shock Absorber Wedge Socket
Patent: 2016/01075

Heightsafety Line Wedge Socket Connector -
HSL/WS/CON



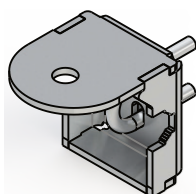
Safe Climb Top Mounting Bracket -
HSL/SC/TOPB



Safe Climb Intermediate Complete -
HSL/SC/INTERM



Vertical Shuttle Complete - **HSL10F/COM**
Patent: 2015/08344



Safe Climb Bottom Mounting Bracket -
HSL/SC/BOTB



Lattice steel structures, Telecommunications
& Transmission power line structures



Access ladders onto roof sections



Monopole Telecommunication Structures

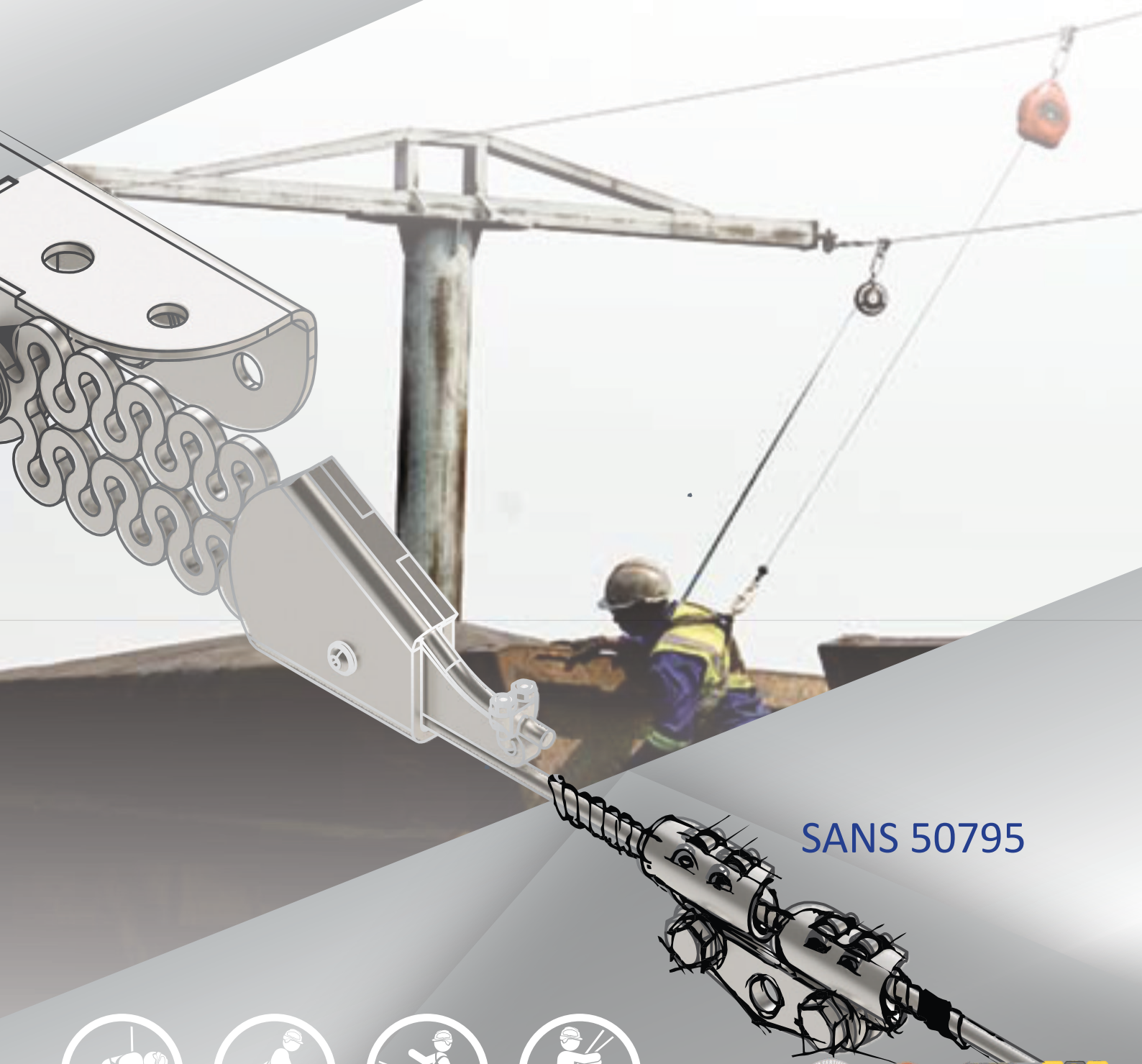
360

heightsafe

TRAINING • GEAR • PROJECTS



HEIGHTSAFETYLINE™
SAFEWALK



SANS 50795



2.3

HEIGHTSAFETYLINE™

SAFE WALK™

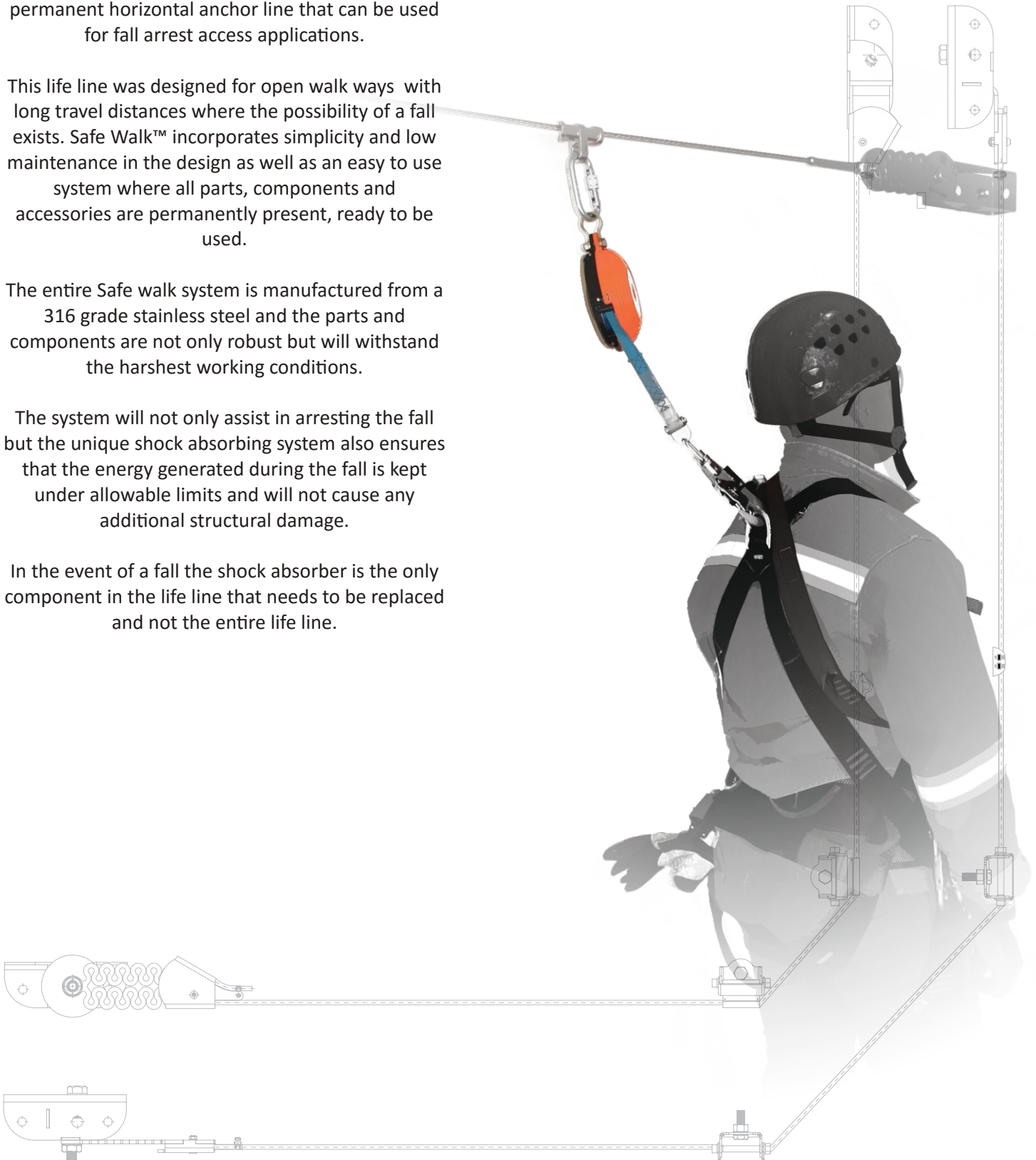
The **HEIGHTSAFETYLINE™ SAFE WALK™** is a permanent horizontal anchor line that can be used for fall arrest access applications.

This life line was designed for open walk ways with long travel distances where the possibility of a fall exists. Safe Walk™ incorporates simplicity and low maintenance in the design as well as an easy to use system where all parts, components and accessories are permanently present, ready to be used.

The entire Safe walk system is manufactured from a 316 grade stainless steel and the parts and components are not only robust but will withstand the harshest working conditions.

The system will not only assist in arresting the fall but the unique shock absorbing system also ensures that the energy generated during the fall is kept under allowable limits and will not cause any additional structural damage.

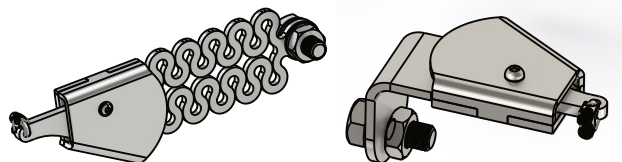
In the event of a fall the shock absorber is the only component in the life line that needs to be replaced and not the entire life line.



2.3

HEIGHTSAFETYLINE™

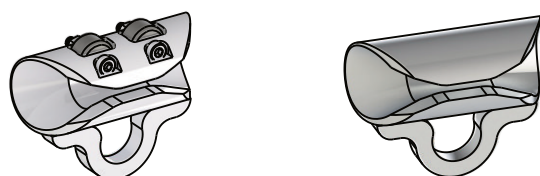
SAFE WALK™



Wedge Shock Absorber Wedge Socket

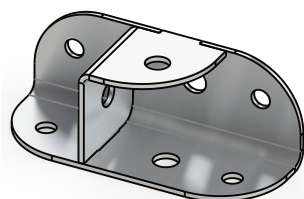
Patent: 2016/01075

Heightsafety Line Wedge Socket Connector -
HSL/WS/CON

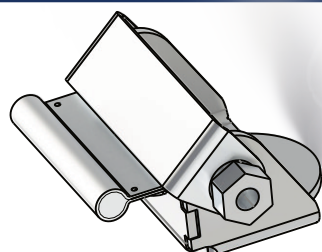


Horizontal Shuttle
with bearing -
HSL10EB/COM

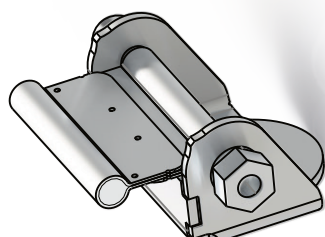
Horizontal Shuttle -
HSL10E/1
Patent: 2015/08344



Universal Bracket - **HSL04D**



Safe Walk Overhead Line Intermediate Bracket -
HSL/SW/INTERM2



Safe Walk Intermediate Bracket -
HSL/SW/INTERM1

Truck loading bays



Truck loading bays



Open walk ways



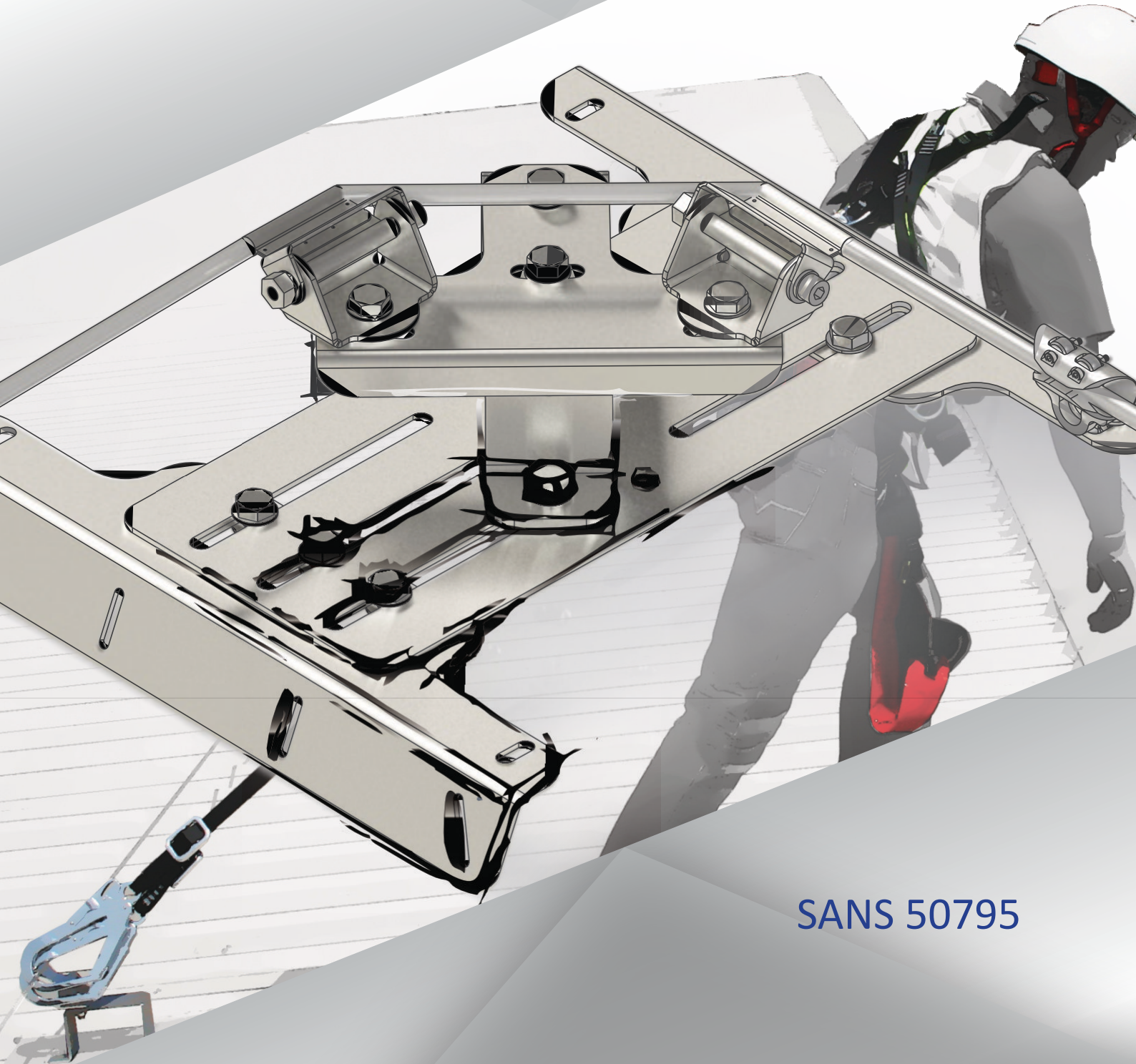
360

heightsafe

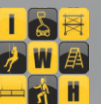
TRAINING • GEAR • PROJECTS



HEIGHTSAFETYLINE™
SAFEROOF



SANS 50795



2.4

HEIGHTSAFETYLINE™

Safe roof™ is a permanent horizontal life line fall arrest system, designed specifically for corrugated sheet metal type roofs.

The Safe Roof™ guarantees permanent fall arrest attachment at all times, via a non-removable shuttle that will slide past the intermediate anchor points and around corners without having to disconnect at any time. The system can be used for both restraint and fall arrest applications. Safe Roof™ will not only assist in arresting the fall but the unique shock absorbing system also ensures that the energy generated during the fall is kept below allowable limits and will not cause any additional structural damage. The shock absorber is the only component that needs replacement in the event of a fall. This system comprises of an adjustable Safe base anchoring system that can be connected directly to the roof sheeting and or to the roof truss system under the sheeting. The permanent life line system is then mounted onto this base system to form a fall arrest anchoring line that can cover all the required access areas on the roof. The adjustable base allows for connection onto a variety of corrugated roof designs. All intermediate base brackets are collapsible and will also indicate overloading of the system.

SAFE ROOF™

With all Heightsafety Line range products the Safe Roof™ also incorporates simplicity and low maintenance in the design as well as an easy to use system where all parts, components and accessories are permanently present ready to be used.

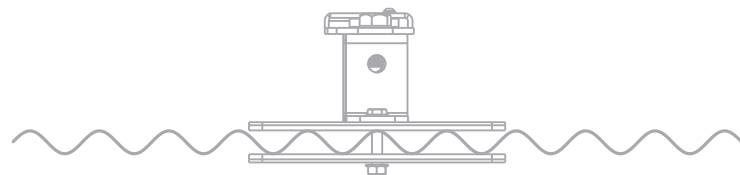
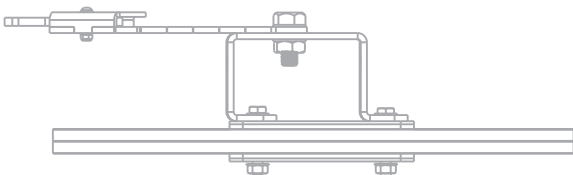
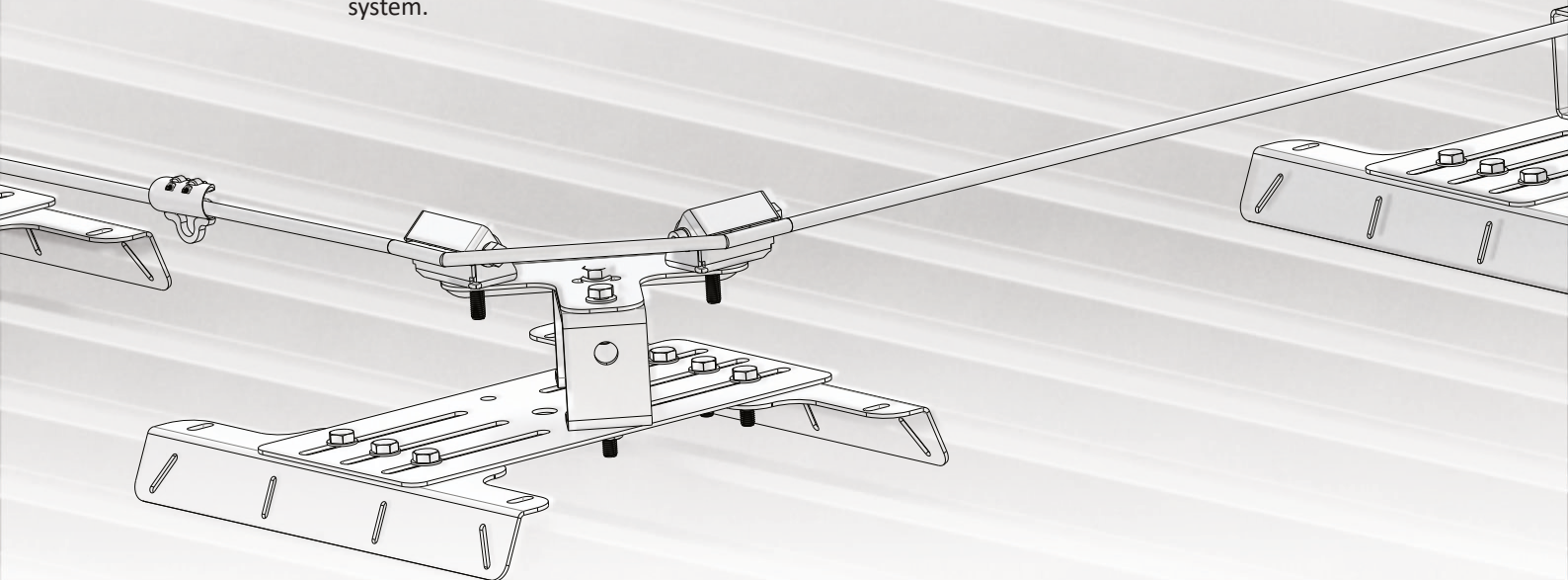
The entire Safe Roof system is manufactured from a 316 grade stainless steel and the parts and components is not only robust but will withstand the harshest working conditions. The anchoring base can be adapted for any type of sheet metal roof like IBR sheeting or clip lock type sheeting.

PENETRATING ROOF SYSTEM:

Can be used on corrugated sheeting type roof where a combination of chemical adhesive and rivets are used to connect the base to the roof. A further safety connection can be done from the base directly onto the roof truss system.

NON-PENETRATING ROOF SYSTEM:

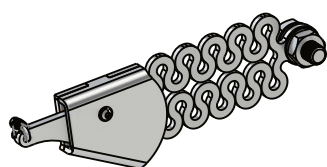
Can be used on clip lock type roof systems where the base is only connected via mechanical clamp system and chemical adhesive. This will ensure that the roof guarantee will not be compromised. guarantee will not be compromised.



2.4

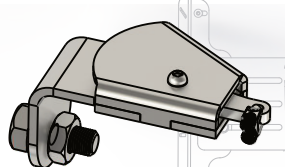
HEIGHTSAFETYLINE™

SAFE ROOF™



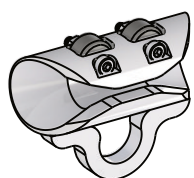
Wedge Shock Absorber

Patent: 2016/01075

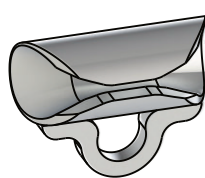


Wedge Socket

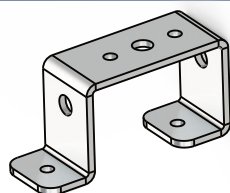
Heightsafety Line Wedge Socket Connector -
HSL/WS/CON



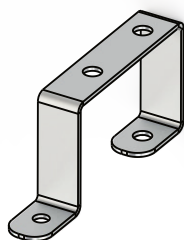
Horizontal Shuttle
with bearing -
HSL10EB/COM



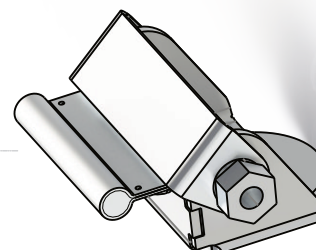
Horizontal Shuttle -
HSL10E/1
Patent: 2015/08344



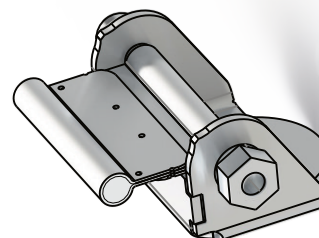
Top Start/End - **HSL08D**



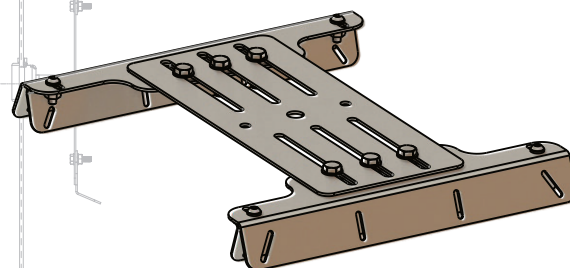
Top Intermediate - **HSL08E**



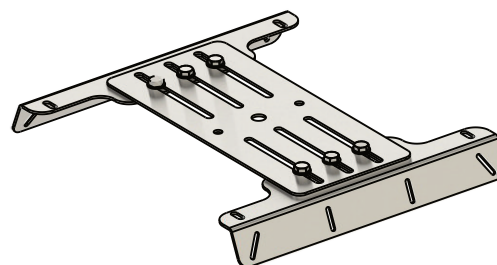
Safe Walk Overhead Line Intermediate Bracket -
HSL/SW/INTERM2



Safe Walk Intermediate Bracket -
HSL/SW/INTERM1



Safe Roof Clip Lock - **HSL/CL/001**



Safe Roof IBR - **HSL/IBR/01**

2.4

HEIGHTSAFETYLINE™

SAFE ROOF™



RECOMMENDED SYSTEMS THAT CAN BE USED IN CONJUNCTION WITH THE *SAFE ROOF™*



Temporary Vertical Lifeline



Retractable life lines



Solar Panel Maintenance

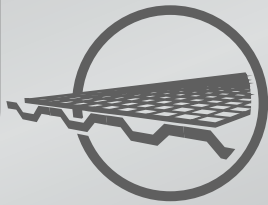


Roof Maintenance

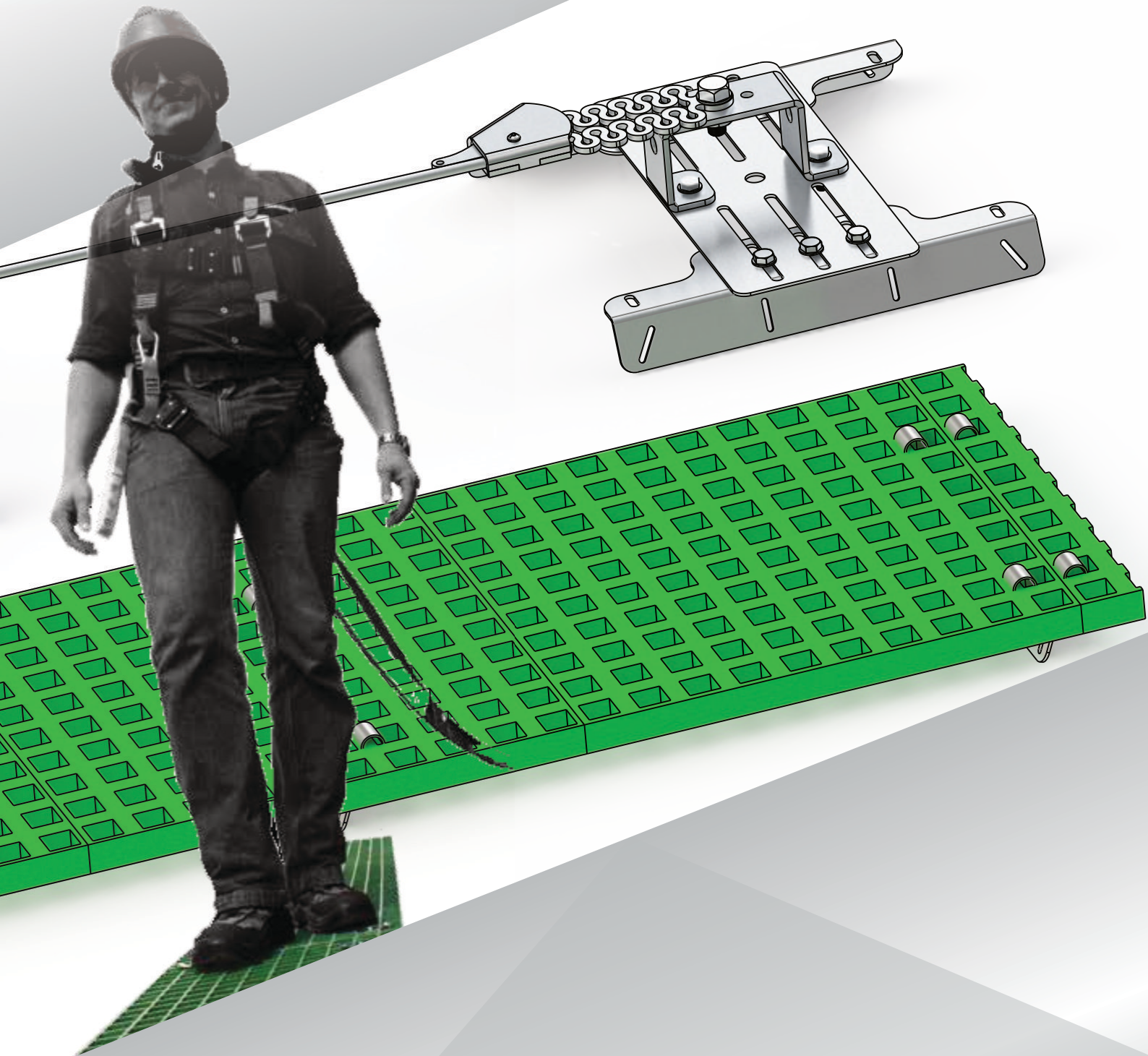
360

heightsafe

TRAINING • GEAR • PROJECTS



HEIGHTSAFETYLINE™ ROOF WALKER



2.5

HEIGHTSAFETYLINE™

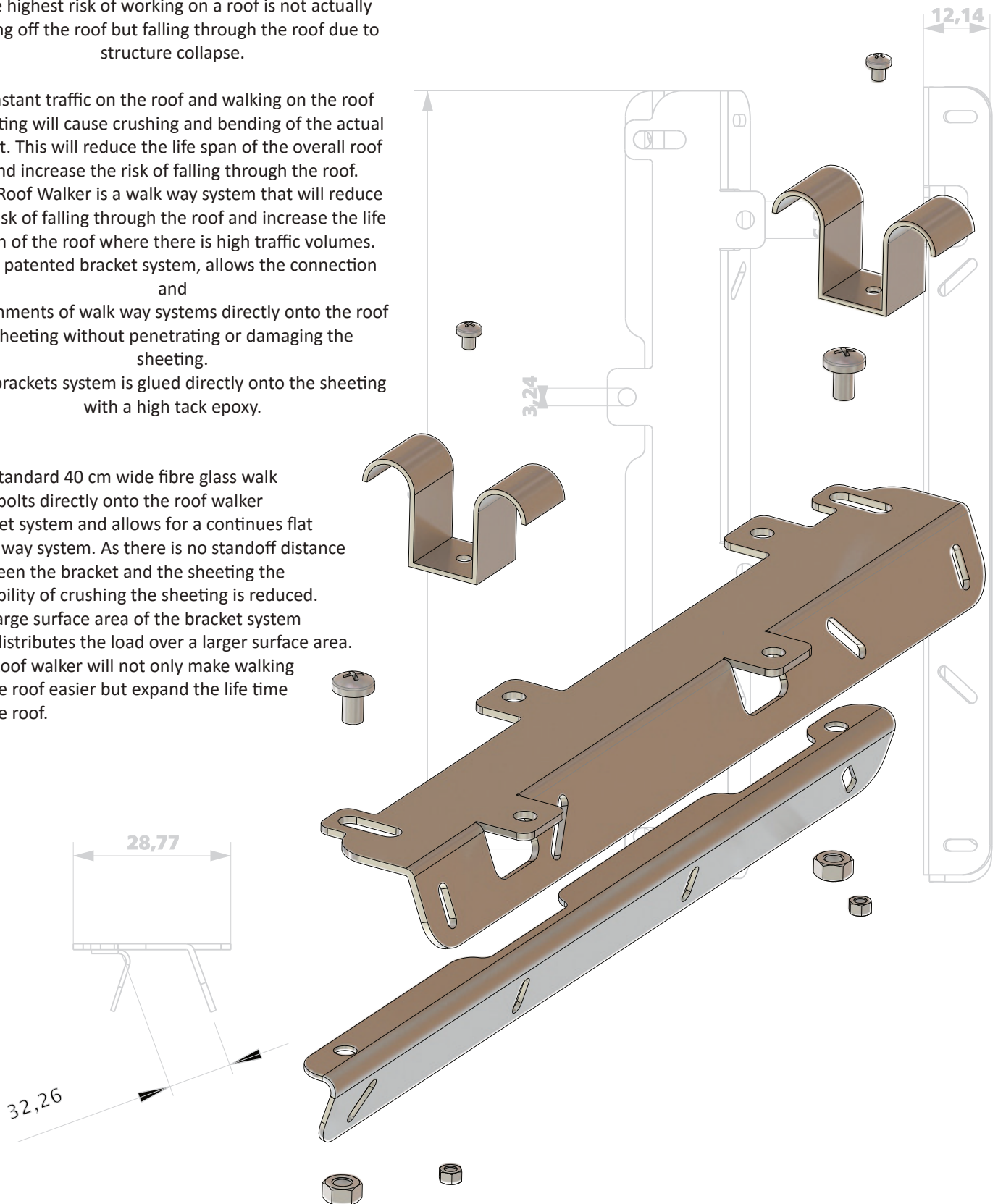
ROOF WALKER™

ROOF WALKER™

The highest risk of working on a roof is not actually falling off the roof but falling through the roof due to structure collapse.

Constant traffic on the roof and walking on the roof sheeting will cause crushing and bending of the actual sheet. This will reduce the life span of the overall roof and increase the risk of falling through the roof. The Roof Walker is a walk way system that will reduce the risk of falling through the roof and increase the life span of the roof where there is high traffic volumes. This patented bracket system, allows the connection and attachments of walk way systems directly onto the roof sheeting without penetrating or damaging the sheeting. The brackets system is glued directly onto the sheeting with a high tack epoxy.

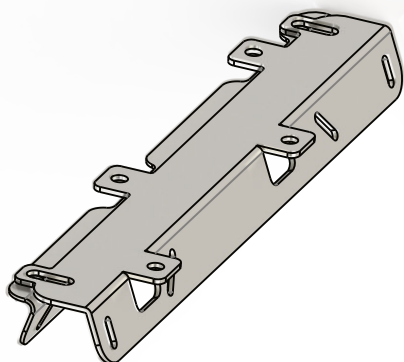
Our standard 40 cm wide fibre glass walk way bolts directly onto the roof walker bracket system and allows for a continues flat walk way system. As there is no standoff distance between the bracket and the sheeting the possibility of crushing the sheeting is reduced. The large surface area of the bracket system also distributes the load over a larger surface area. The Roof walker will not only make walking on the roof easier but expand the life time of the roof.



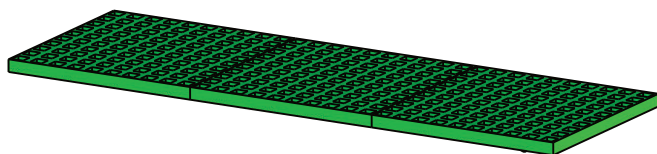
2.5

HEIGHTSAFETYLINE™

ROOF WALKER™



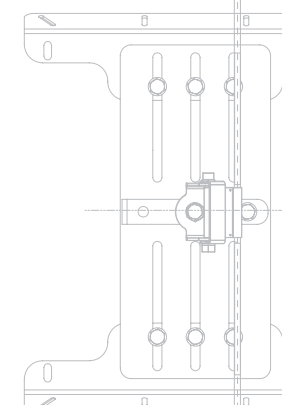
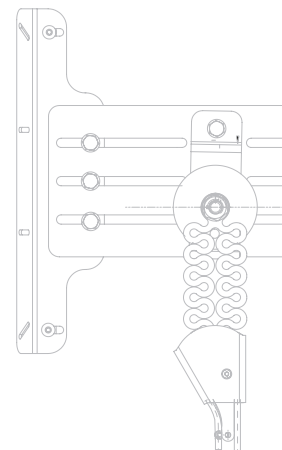
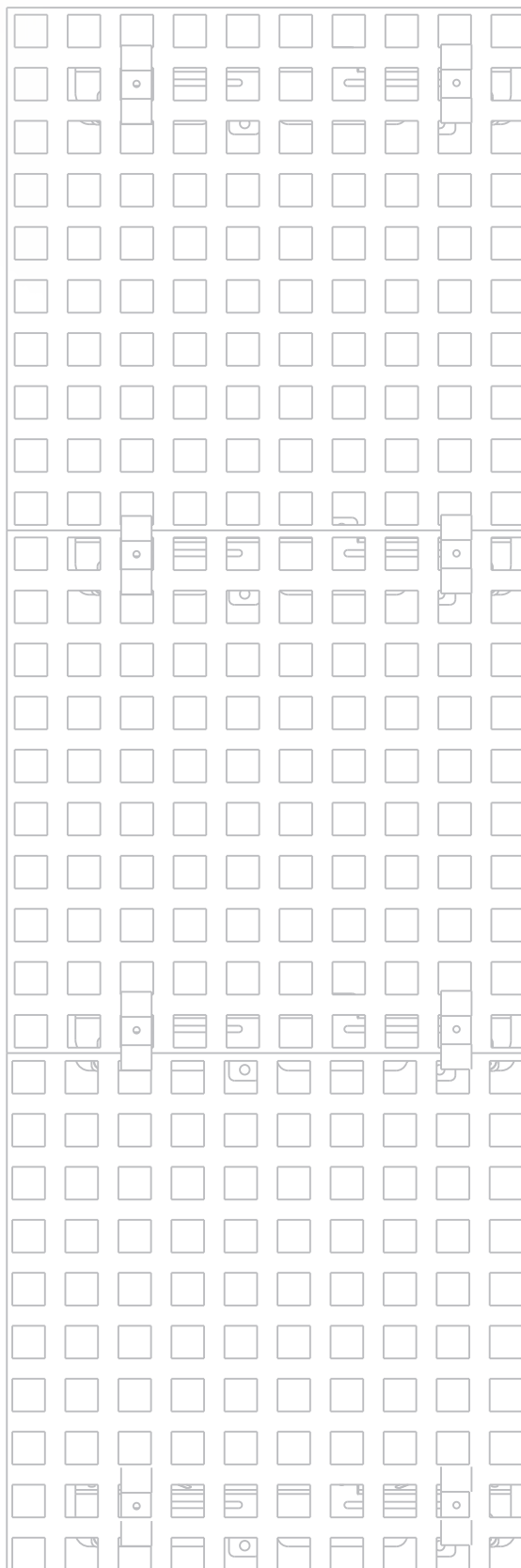
Roof Walk IBR Straight - **HSL/RW/IBR**



Roof Walk Way Grid 25x615x2440 -
HSL/RW/WWG2



Roof Walk Way Nut -
HSL/RW/WWN





For more information, please contact us at:

Tel: +27(0)86 112 7749

Fax: +27(0)11 314 2733

Mail: sales@heightsafe360.co.za

Website: www.heightsafe360.co.za

1030 Sixteenth Street,
Unit I1, Tillbury Business Park
Randjespark, Midrand
1685